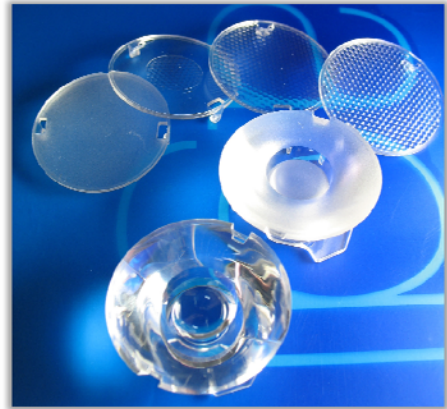


[A3] A3 LENS SERIES-1

■ Contents

1. Lens Layout
2. Lens Specification
3. Measurement data
4. Lens Characteristics
5. View of the Assembly
6. Sectional view & Dimensions
(Collimate Lens & Beam Lens Filter)
7. Handling of the Collimate Lens



- The 'A3 Lens Series-1' offers low profile lens especially designed for the Seoul Semiconductor LEDs
: [Acriche 'Ax32xx'](#)

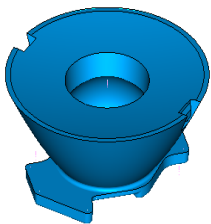


<http://www.seoulsemicon.co.kr>

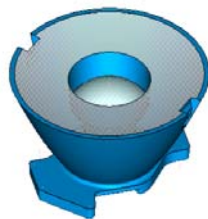
※ Korea Patent no. 10-0837573 & 10-0756174, issued June 4, 2008

Copyright © 2008 Sekonix co., Ltd. All rights reserved.

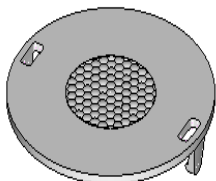
1. Lens Layout



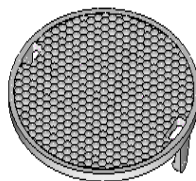
■ Collimate Lens #1



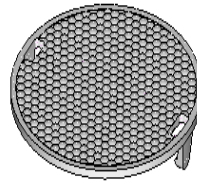
■ Collimate Lens #2
(Fog Pattern)



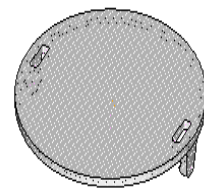
■ Narrow Filter



■ Medium Filter
(Single Side)



■ Wide Filter
(Both Sides)



■ Fog Filter

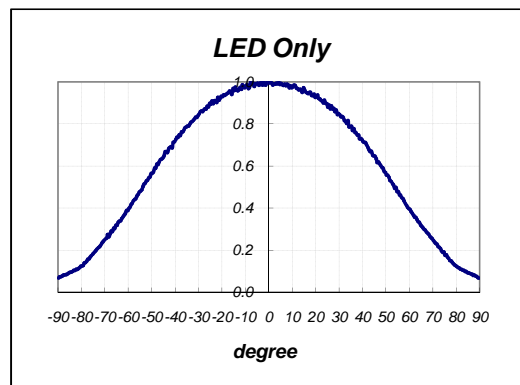
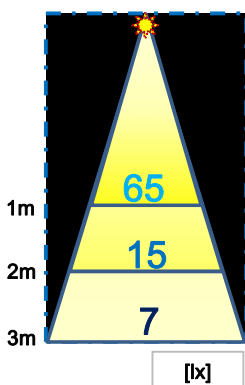
2. Lens Specification

Lens Type	Beam Angle	Beam Pattern	Components
Collimate Lens #1	15 deg.	Circle	Single Lens
Collimate Lens #2	25 deg.	Circle(Smooth)	
Narrow Filter	15 deg.	Circle	Collimate lens #1 + Filter
Medium Filter	20 deg.	Circle	
Wide Filter	30 deg.	Circle	
Fog Filter	25 deg.	Circle(Smooth)	

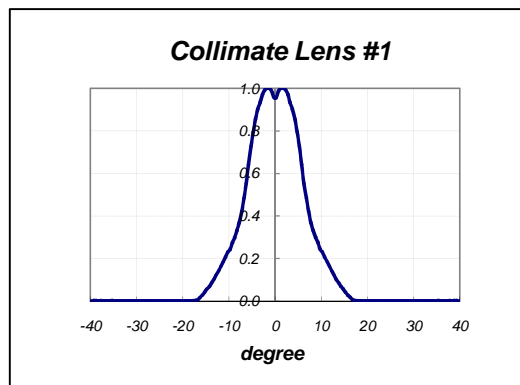
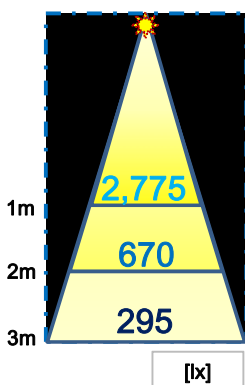
3. Measurements data (Illuminance, Distribution Graph, Photo)

Test Conditions :	LED : Seoul Semiconductor 'AW3200' (Luminous Flux = 195 Lumen)
	Room Luminous Intensity : 0 Lumen
	Room Temperature : 20°C ± 1°C
	LED temperature after 10 min : ~ 36°C

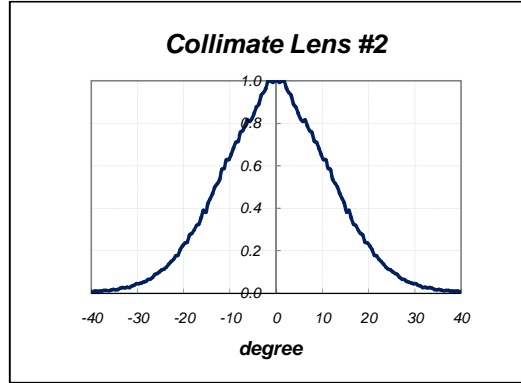
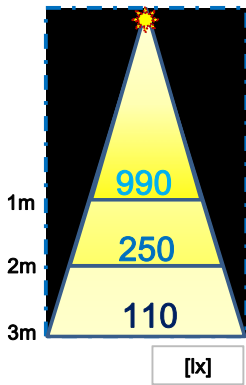
■ LED Only



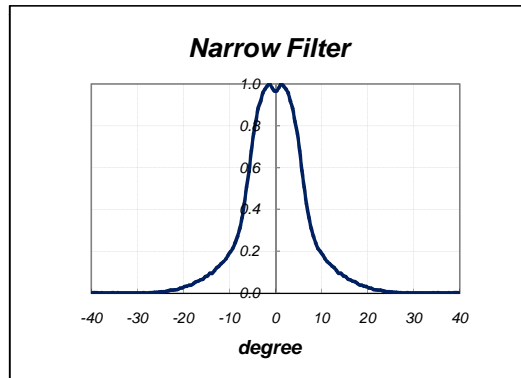
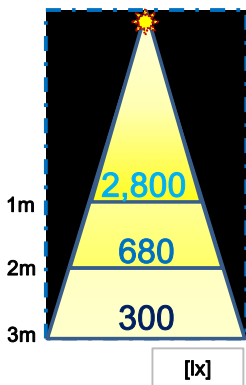
■ Collimate Lens #1



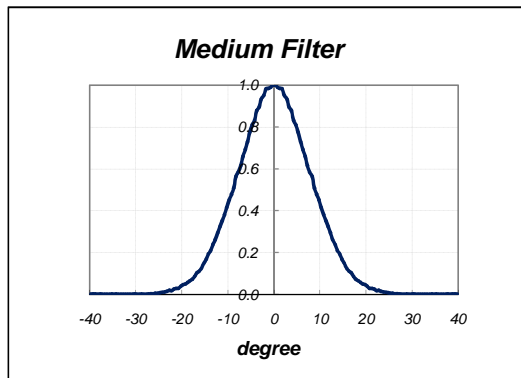
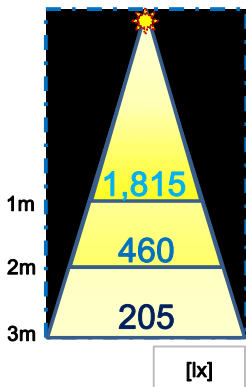
■ Collimate Lens #2



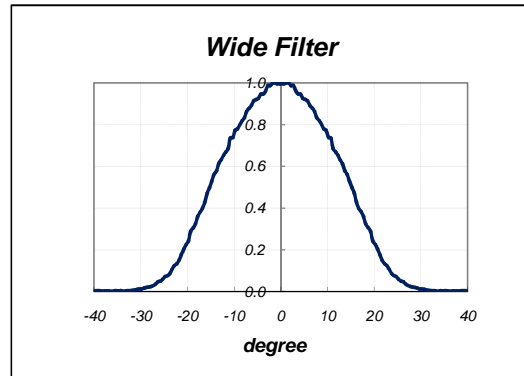
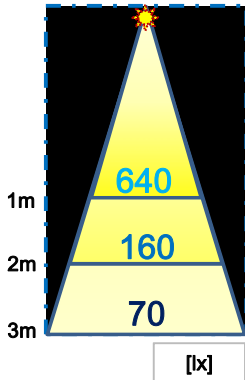
■ Narrow Filter



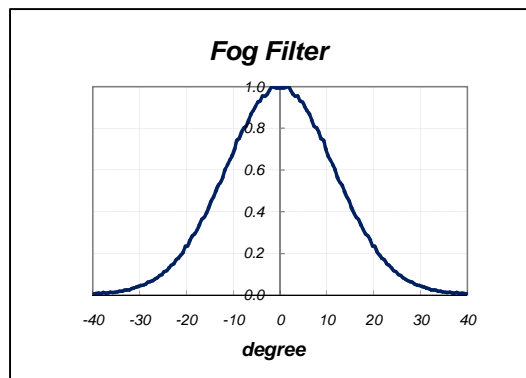
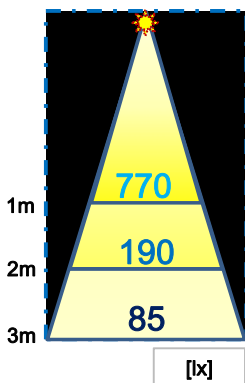
■ Medium Filter



■ Wide Filter



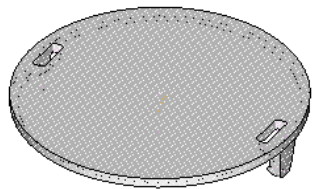
■ Fog Filter



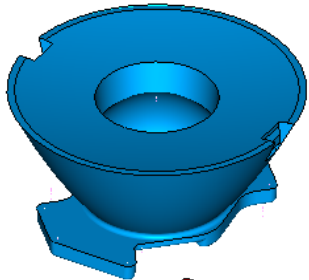
4. Lens Characteristics

Parameter	Symbol	Value	Unit
Collimate Lens	PMMA (Optics)	-	-
Beam Lens Filter	PMMA (Optics)	-	-
Operating Temp.	T _{opr}	-40 ~ +80	°C
Storage Temp.	T _{stg}	-40 ~ +80	°C

5. View of the Assmby with the Collimate Lens & Beam Lens Filter



Beam Lens Filter
(Narrow / Medium / Wide / Fog)



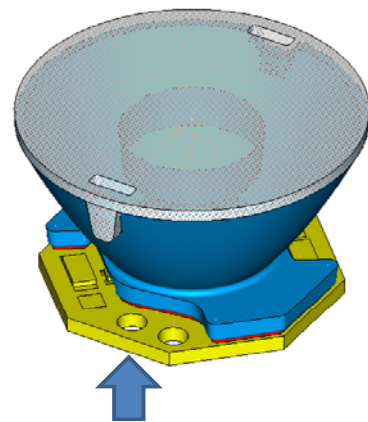
Collimate Lens #1



3M_Double Coated Polyester Tapes

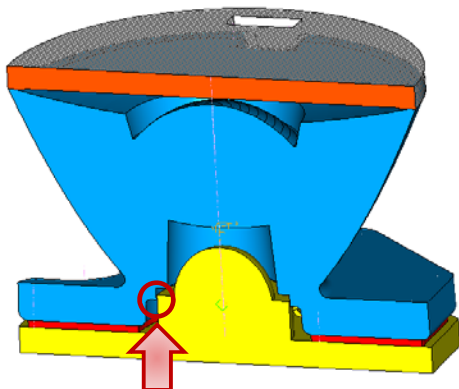


Acriche 3 LED

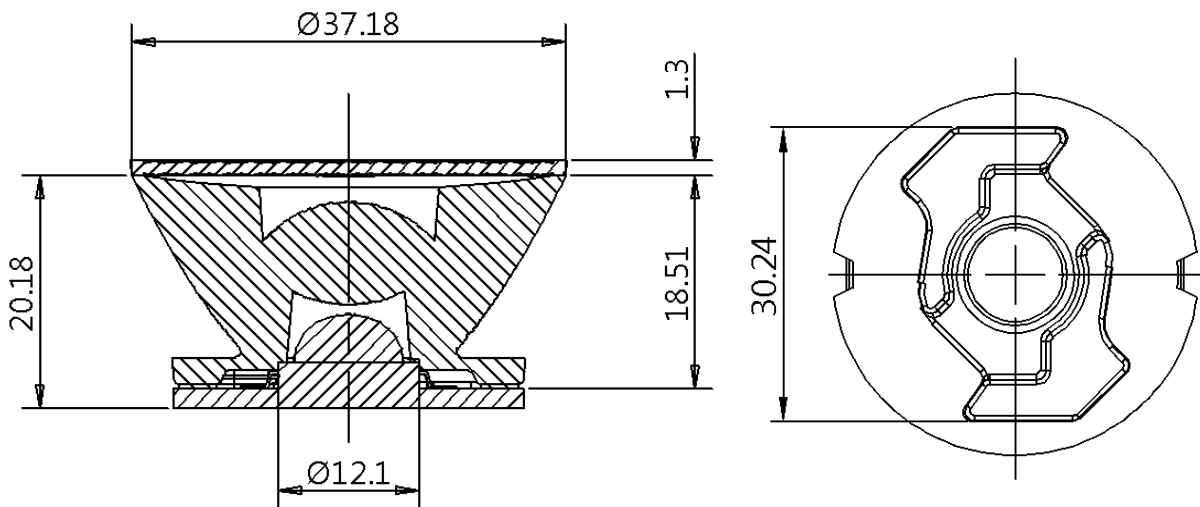


The bottom of the lens sits on the PCB of the Acriche3 LEDs.

6. Sectional view & Dimensions



The function of this part is to align the Lens with LED chip.



7. Handling of the Collimate Lens

- Do not store in dusty place.
- Do not expose under corrosive environment.
- Do not touch the lens surface with bare-hand.
- Do not dip in or apply to aggressive chemicals, and also.
- DO not wipe with cloth or paper soaked with aggressive chemicals.

■ 'A3 Lens Series-1' is ideal optical solution for Acriche3 LEDs illumination application.

